

Connah's Quay Low Carbon Power

Environmental Statement Volume III Figure 6-6: Indicative Location of Design Changes

Planning Inspectorate Reference: EN010166

Document Reference: EN010166/APP/6.3

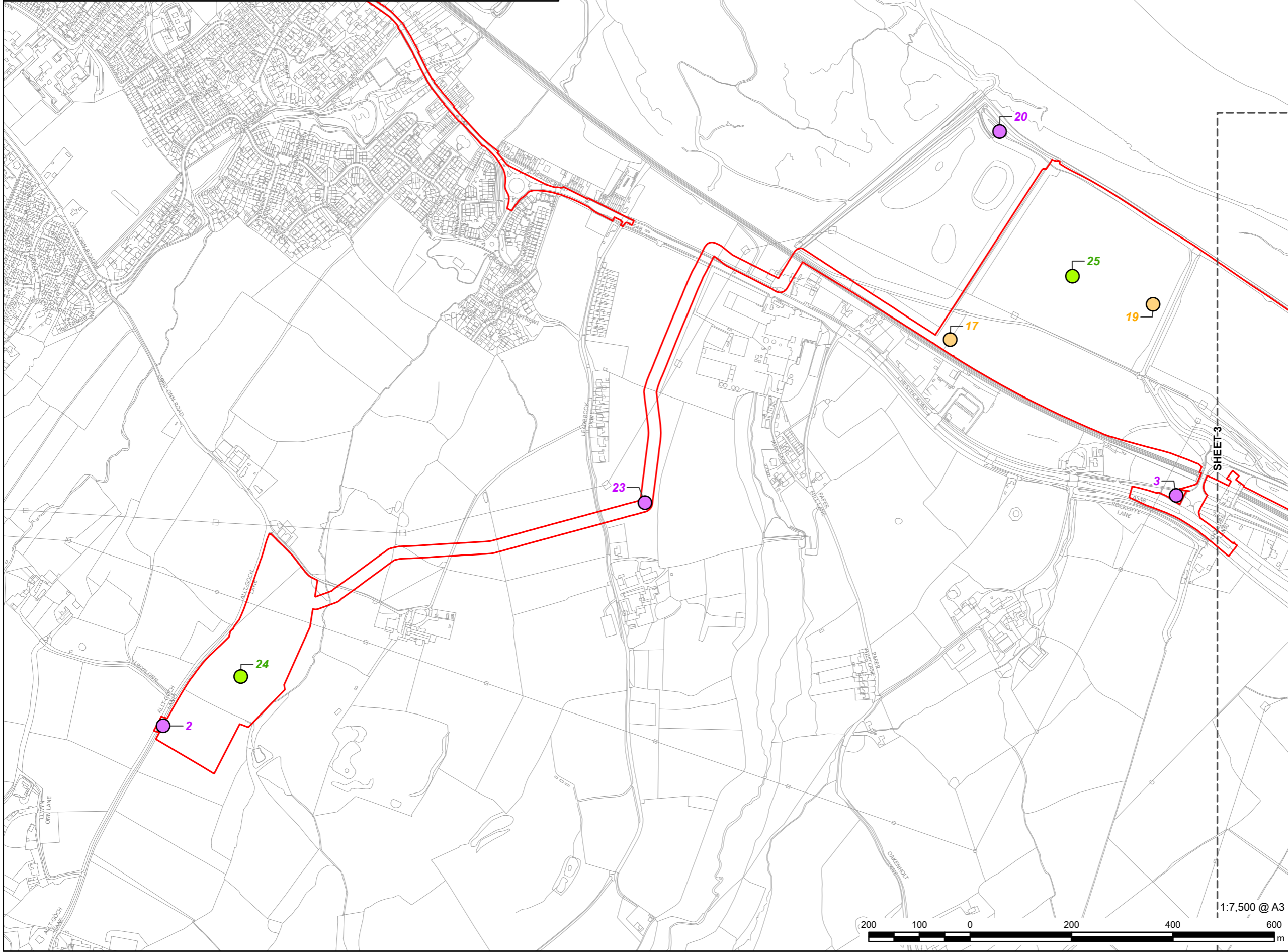
Planning Act 2008 (as amended)

Infrastructure Planning (Applications: Prescribed Forms and Procedure) Regulations
2009 - Regulation 5(2)(a)

Revision 01

March 2026

Design Change - Description		
2 - Amendment to the western boundary of the Proposed CO ₂ Connection corridor	19 - Confirmation of ground raising to 7.4m AOD (revised from previous 7.9 m)	24 - Confirmation of temporary compound location within Proposed CO ₂ Connection Corridor
3 - Amendment to remove the triangular extension on the western side of the Access to Main Development Area, bordering the A548 and west of Kelsterton Road	20 - Access to Wildlife Hides removed from Order limits	25 - Amendments to temporary construction laydown area boundaries within Main Development Area
17 - The Proposed CO ₂ AGI has been relocated within the Main Development Area	23 - Reduction of Repurposed CO ₂ Connection Corridor with from 100 m to 24.4 m	

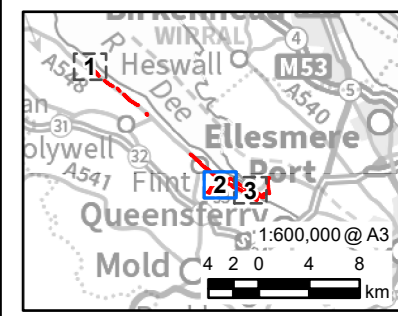


PROJECT
Connah's Quay Low Carbon Power

CONSULTANT
 AECOM Limited
 The Colmore Building
 Colmore Circus, Queensway
 Birmingham, B4 6AT
 www.aecom.com

LEGEND

	Order limits
●	Change to Order limits
●	Change to Design of the Connah's Quay Low Carbon Power Abated Generating Station
●	Change to Construction Assumption



NOTES
 © Crown Copyright 2025. All rights reserved.
 Ordnance Survey Licence AC0000808122.

Further details of each of the design changes are provided in Table 6-4 of Chapter 6: Project Alternatives (EN010166/APP/6.2.6)

ISSUE PURPOSE
 Environmental Statement

DATE
 March 2026

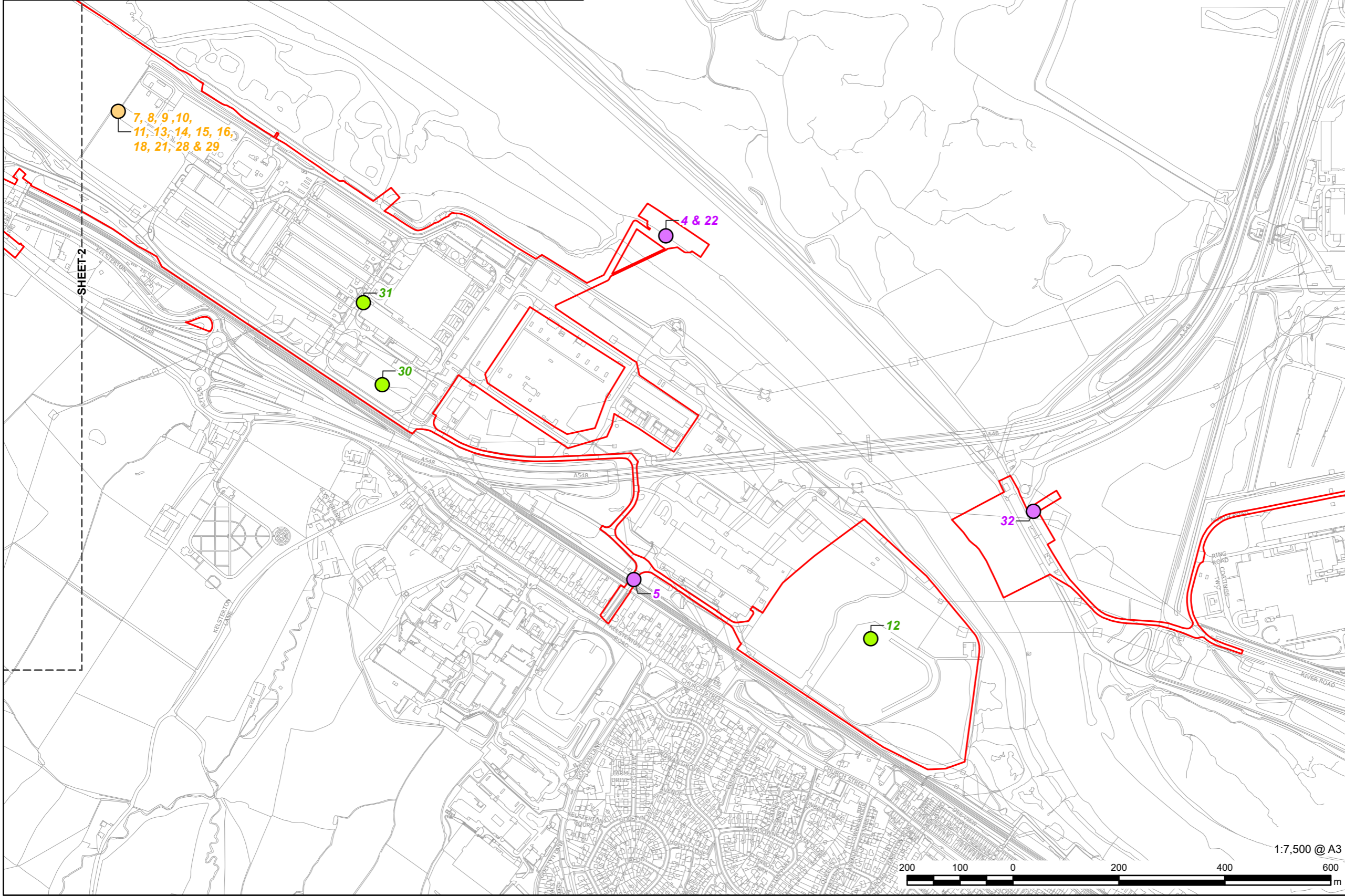
PROJECT NUMBER
 60768754

FIGURE TITLE
 Indicative Location of Design Changes
 Sheet 2 of 3

FIGURE NUMBER
 Figure 6-6

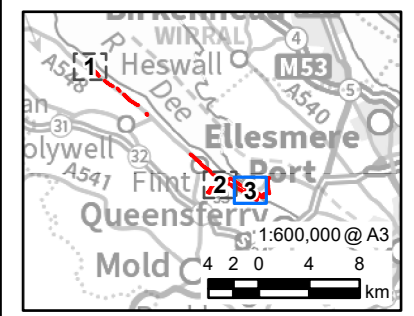
This drawing has been prepared for the use of AECOM's client. It may not be used, modified, reproduced or relied upon by third parties, except as signed by AECOM or as required by law. AECOM accepts no responsibility, and denies any liability whatsoever, to any party that uses or relies on this drawing without AECOM's express written consent. Do not scale this document. All measurements must be obtained from the stated dimensions.

Design Change - Description		
4 - Amendment to straighten the southern boundary of the Water Connection Corridor	12 - Amendments to the extent of construction laydown areas	22 - Water Connection Corridor boundary amended to remove cooling water abstraction and discharge infrastructure
5 - Amendment to remove a small gap within the Order limits	13 - Amendments to the extent of construction laydown areas	28 - CCGP absorber stacks decreased from a maximum height of 150 m AGL to 145 m AGL
6 - Amendment to wholly remove the Natural Gas Connection Corridor	14 - CCGT stacks increased from a height of 120 m to 150 m AGL	29 - HRSBG stacks decreased from a maximum height of 150 m AGL to a maximum height of 130 m AGL
7 - Introduction of Electricity System Restoration capabilities	15 - HRSBG stacks increased from a height of 85 m to 150 m AGL	30 - Change to Parameter 1H to include an additional area adjacent to the existing Connah's Quay power Station
8 - CCGT building increased from a height of 32 m to 50 m AGL	16 - Design option/scenario for two CCGT stacks per Train has been removed	31 - Minor changes to areas of retained habitats within the Main Development Area
9 - CCGT stacks increased from a height of 105 m to 120 m AGL	18 - Inclusion of Maintenance Laydown Areas within indicative design	32 - Provision of a 1,800 m ² extension to the existing area of hardstanding at Connah's Quay North Jetty to enable AIL deliveries
10 - HRSBG buildings increased from a height of 42 m to 50 m AGL	21 - Inclusion of Maintenance Laydown Areas within indicative design	
11 - HRSBG stacks increased from a height of 56 m to 85 m AGL		



LEGEND

- Order limits
- Change to Order limits
- Change to Design of the Connah's Quay Low Carbon Power Abated Generating Station
- Change to Construction Assumption



NOTES
 © Crown Copyright 2025. All rights reserved.
 Ordnance Survey Licence AC0000808122.

Further details of each of the design changes are provided in Table 6-4 of Chapter 6: Project Alternatives (EN010166/APP/6.2.6)

ISSUE PURPOSE
 Environmental Statement

DATE
 March 2026

PROJECT NUMBER
 60768754

FIGURE TITLE
 Indicative Location of Design Changes
 Sheet 3 of 3

FIGURE NUMBER
 Figure 6-6

This drawing has been prepared for the use of AECOM's client. It may not be used, modified, reproduced or relied upon by third parties, except as signed by AECOM or as required by law. AECOM accepts no responsibility, and denies any liability whatsoever, to any party that uses or relies on this drawing without AECOM's express written consent. Do not scale this document. All measurements must be obtained from the stated dimensions.

1:7,500 @ A3

